

ROOFING SYSTEM

EDGE BAND

ROOF SUPPORT SYSTEM - TRUSS OR RAFTERS

SOFFIT W/ VENTS

TOP PLATE

A  
1 | 3

B  
1 | 4

FINISH AS PER PLANS AND SPECIFICATIONS

CPBS SHEATHING SYSTEM (1-1/8" = R6) STANDARD SHEATHING LENGTHS ARE 98", 110" & 122". SHEATHING MAY BE CUT ON SITE AS REQUIRED.

5-1/8" - 1-1/8" SHEATHING

SCREW PRODUCT BRONZE STAR SCREW BTX-09234 SPACED PER ENGINEERING SPECIFICATIONS

WOOD STUD WALL FRAMING MEMBERS WITH BATT INSULATION BETWEEN STUDS

1/2" GYPSUM BOARD ON INTERIOR

BUILDING FOUNDATION

TREATED SOLE-PLATE WALL FRAMING MEMBER

DIETRICH - JWP WITH 1-3/8" GROUND 3-1/2" HIGH-BACK J-WEEP - CONTINUOUS

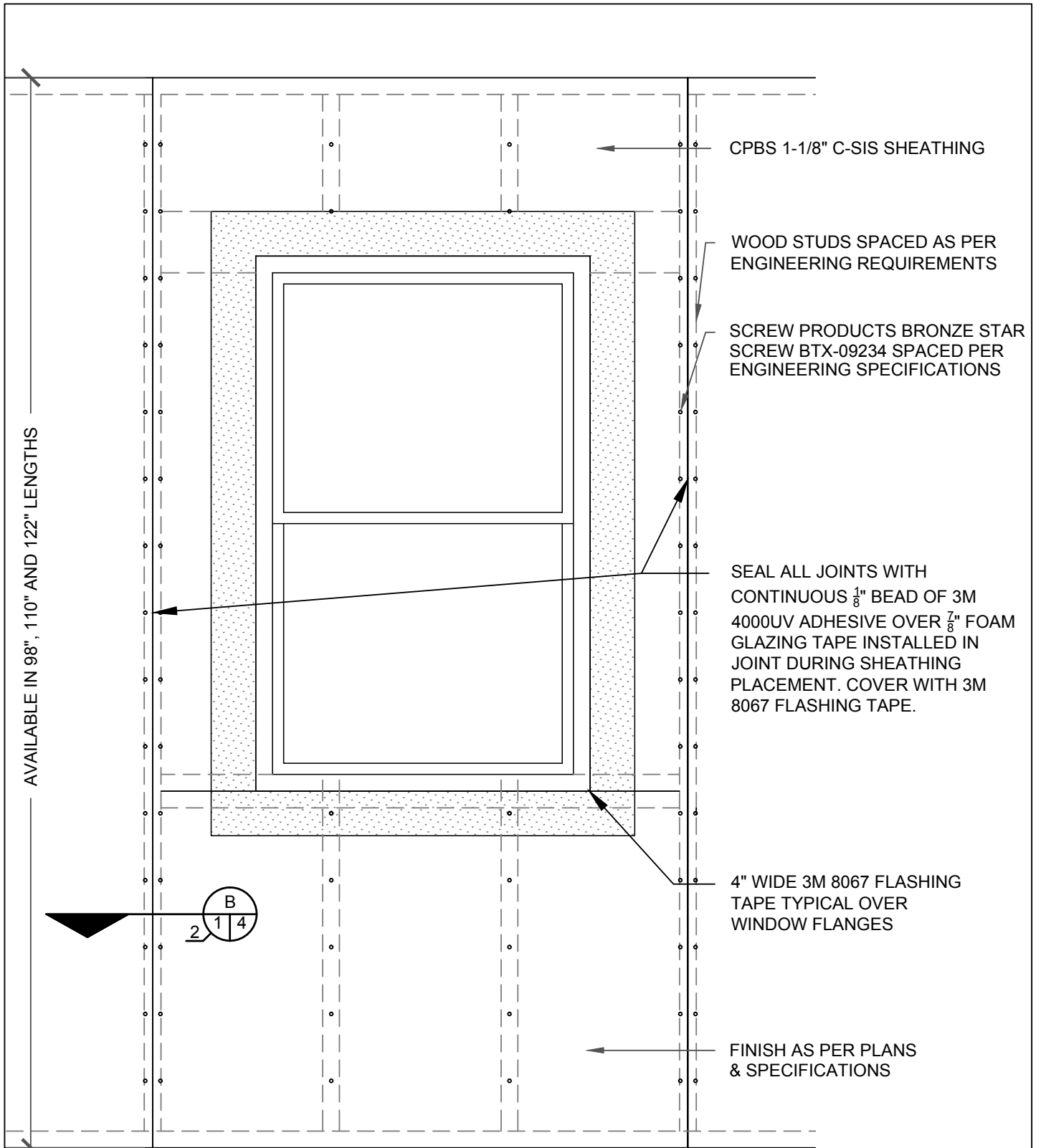
WALL ANCHORS AS PER A/E DRAWINGS

C  
1 | 3

**C-SIS SHEATHING - WALL SECTION**

SCALE: 1" = 1'-0"

<p><b>COMPOSITE PANEL BUILDING SYSTEMS, LLC</b></p>		<p>DRAWINGS AND INFORMATION SHOWN IN THIS DRAWING REMAINS THE SOLE PROPERTY OF CPBS AND MAY NOT BE REPRODUCED OR DISTRIBUTED WITHOUT CONSENT OF CPBS.</p>	<p><b>A1</b></p>
<p>C-SIS SHEATHING SYSTEM 1-1/8" SHEATHING OVER 2x4 WOOD FRAME WALL</p>	<p>DATE: 12-31-13 BY: LFB</p>		



AVAILABLE IN 98", 110" AND 122" LENGTHS

CPBS 1-1/8" C-SIS SHEATHING

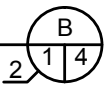
WOOD STUDS SPACED AS PER ENGINEERING REQUIREMENTS

SCREW PRODUCTS BRONZE STAR SCREW BTX-09234 SPACED PER ENGINEERING SPECIFICATIONS

SEAL ALL JOINTS WITH CONTINUOUS  $\frac{1}{8}$ " BEAD OF 3M 4000UV ADHESIVE OVER  $\frac{7}{8}$ " FOAM GLAZING TAPE INSTALLED IN JOINT DURING SHEATHING PLACEMENT. COVER WITH 3M 8067 FLASHING TAPE.

4" WIDE 3M 8067 FLASHING TAPE TYPICAL OVER WINDOW FLANGES

FINISH AS PER PLANS & SPECIFICATIONS

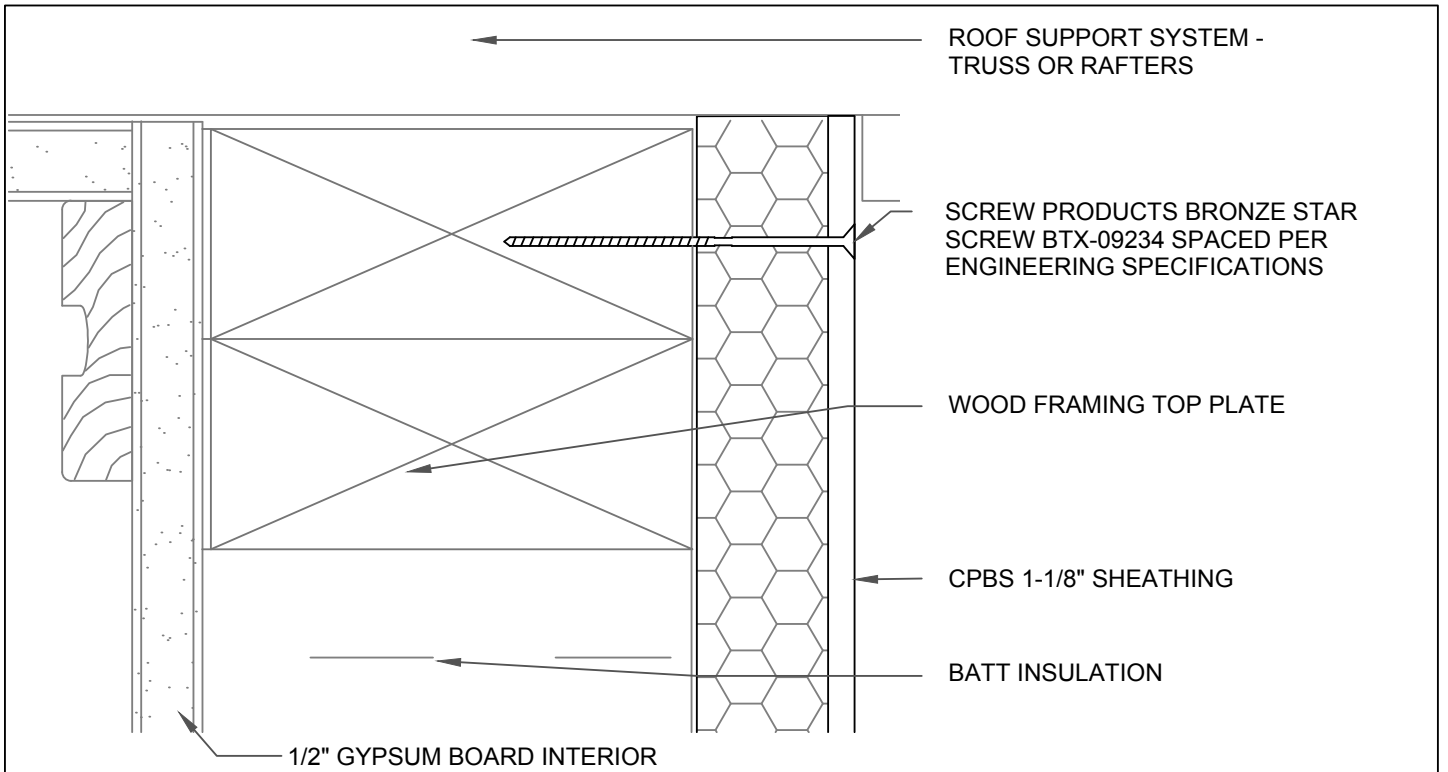


**C-SIS SHEATHING - WALL ELEVATION**

SCALE: 1" = 1'-0"

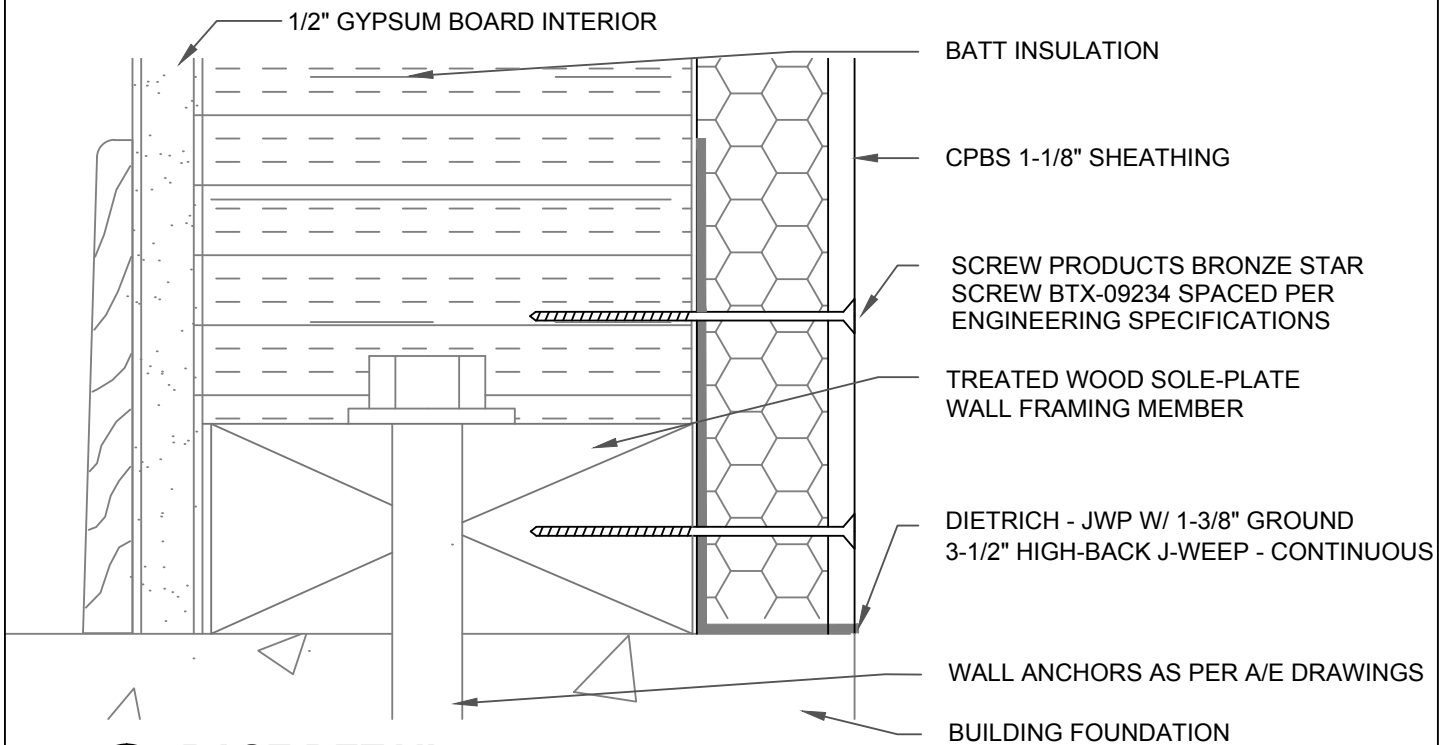
NOTE:  
ALL WALL PENETRATIONS, FENESTRATIONS AND OPENINGS TO BE SEALED WITH 3M 8067 FLASHING TAPE

<b>COMPOSITE PANEL BUILDING SYSTEMS, LLC</b>		DRAWINGS AND INFORMATION SHOWN IN THIS DRAWING REMAINS THE SOLE PROPERTY OF CPBS AND MAY NOT BE REPRODUCED OR DISTRIBUTED WITHOUT CONSENT OF CPBS.	<b>A2</b>
C-SIS SHEATHING SYSTEM 1-1/8" SHEATHING OVER 2x4 WOOD FRAME WALL	DATE: 02-14-13 BY: LFB		



**HEAD DETAIL**

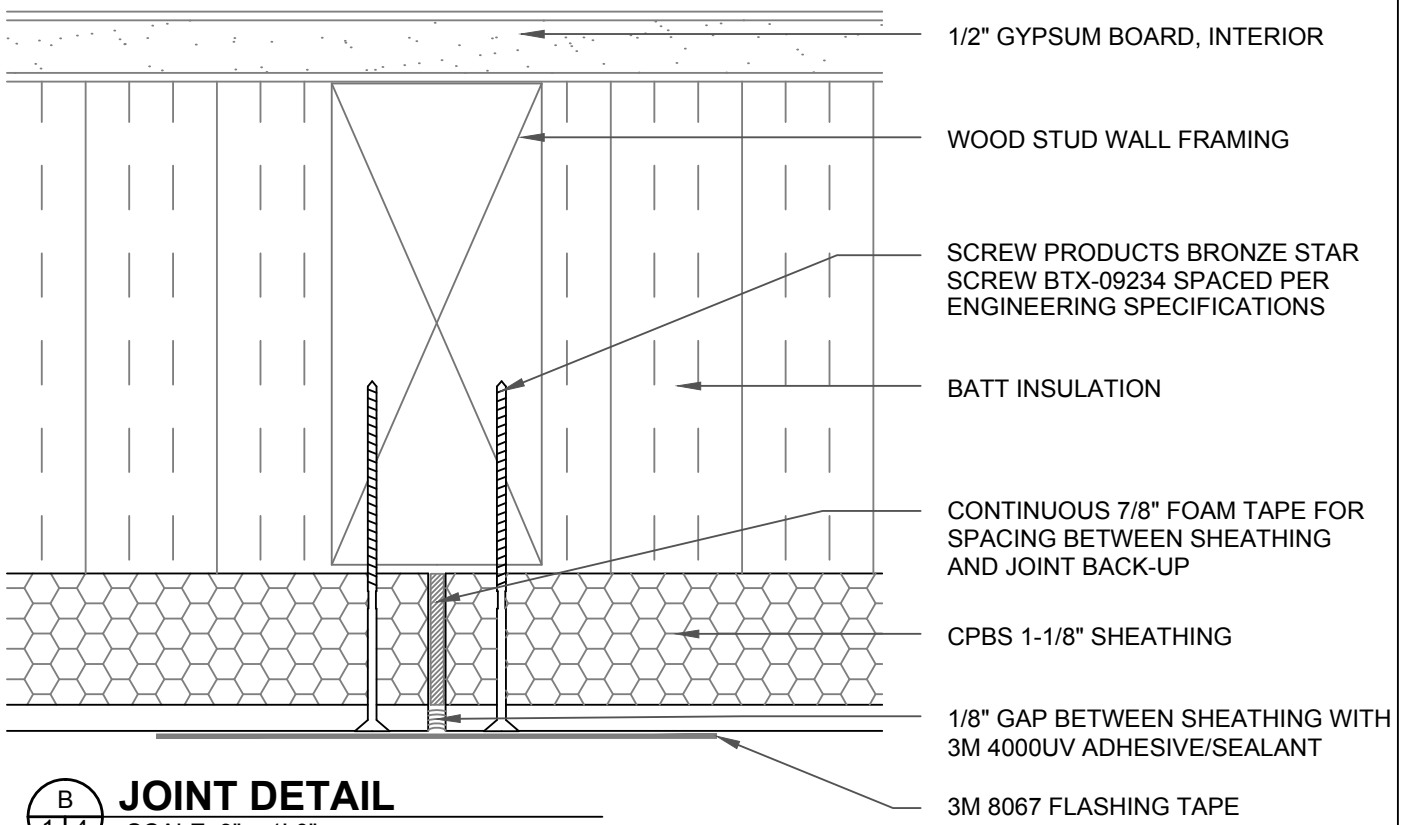
SCALE: 9" = 1'-0"



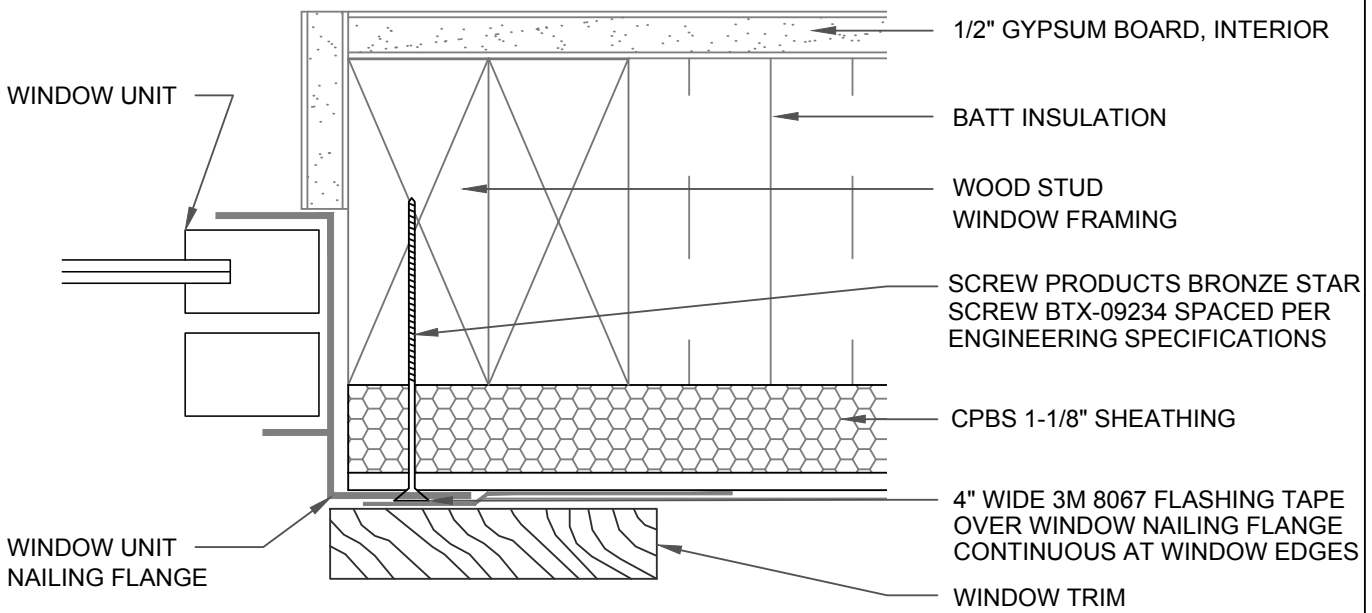
**BASE DETAIL**

SCALE: 9" = 1'-0"

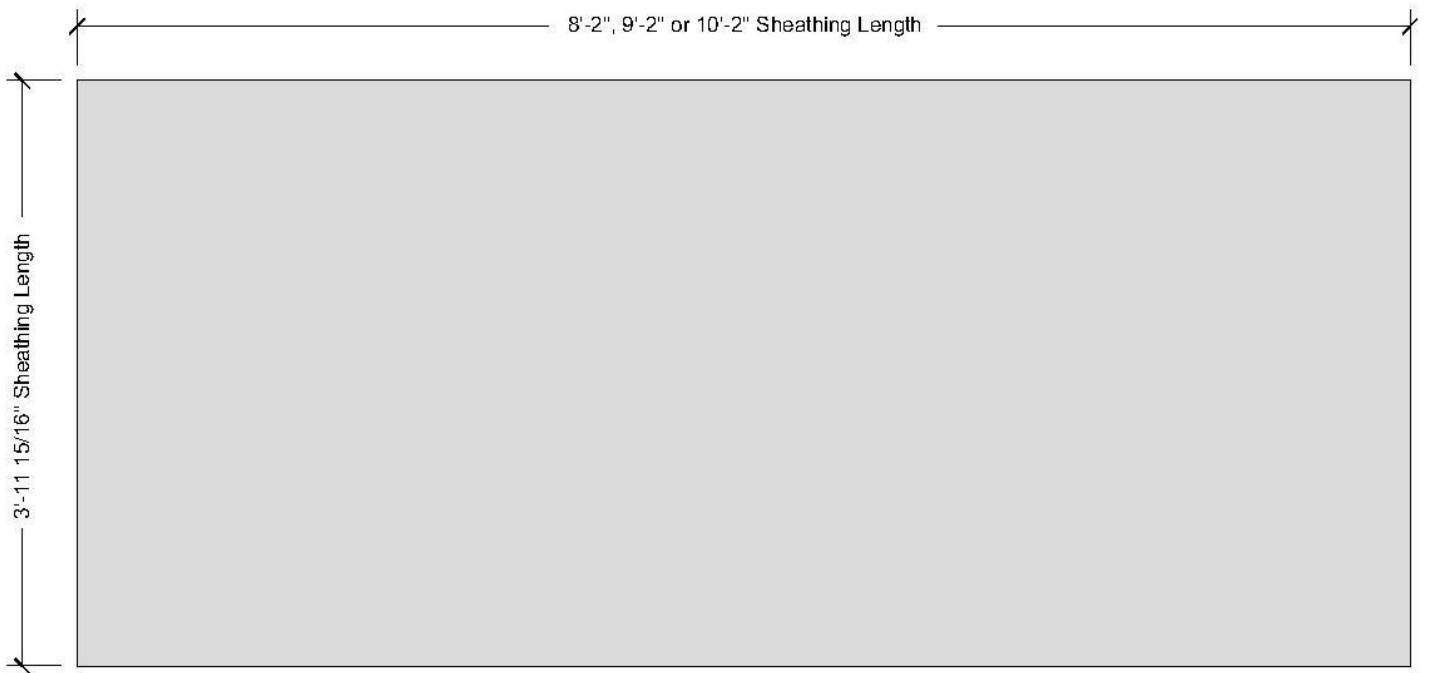
<b>COMPOSITE PANEL BUILDING SYSTEMS, LLC</b>		DRAWINGS AND INFORMATION SHOWN IN THIS DRAWING REMAINS THE SOLE PROPERTY OF CPBS AND MAY NOT BE REPRODUCED OR DISTRIBUTED WITHOUT CONSENT OF CPBS.	A3
C-SIS SHEATHING SYSTEM 1-1/8" SHEATHING OVER 2x4 WOOD FRAME WALL	DATE: 02-14-13 BY: LFB		



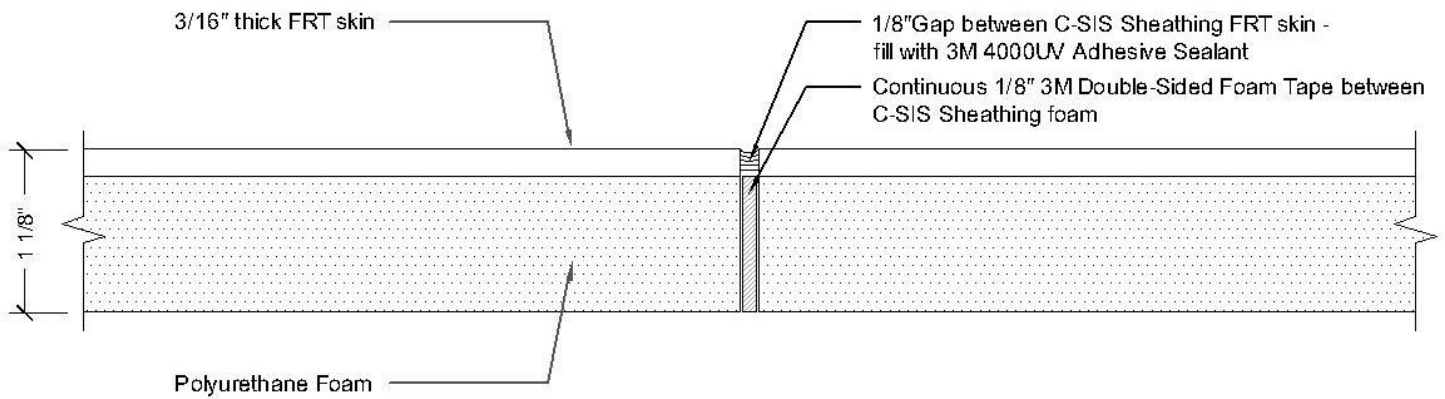
**B** **JOINT DETAIL**  
 2 1 4 SCALE: 9" = 1'-0"



**TYPICAL WINDOW DETAIL**  
 SCALE: 6" = 1'-0"



**1 1/8" Composite Structural Insulated Sheathing (C-SIS)**



**Joint Plan Detail**

<b>Composite Panel Building Systems</b>		DRAWINGS AND INFORMATION SHOWN IN THIS DRAWING REMAINS THE SOLE PROPERTY OF CPBS AND MAY NOT BE REPRODUCED OR DISTRIBUTED WITHOUT CONSENT OF CPBS.	<b>1</b>
1 1/8" Composite Structural Insulated Sheathing (C-SIS)			
Drawn by: MAP	Revision: 08-18-13 LFB		